

# Pressure Testing SeaSafe Li-Ion Cells, Modules, and Systems – A Case History

**SWE**

SOUTHWEST ELECTRONIC ENERGY GROUP

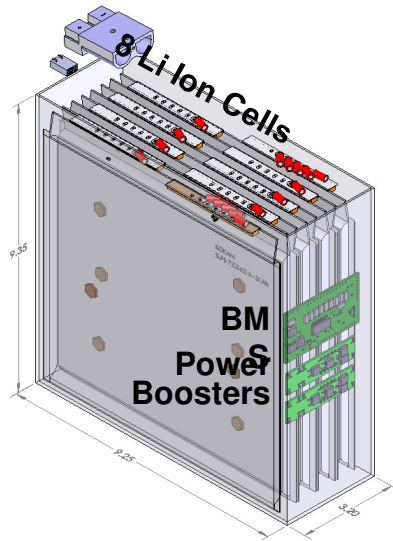
*Advanced Battery Solutions*

**David White and Leon Adams**

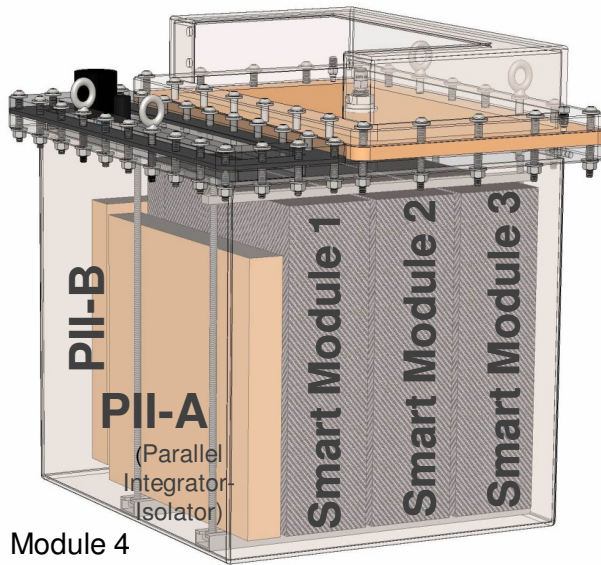
**Southwest Electronic Energy Group**

1

- Introduction to SWE SeaSafe
- SeaSafe Pressure Test History
- Details of 6 Most Recent Tests
- Future Test Plans
- Summary
- Acknowledgements



29V Smart Module Internal View



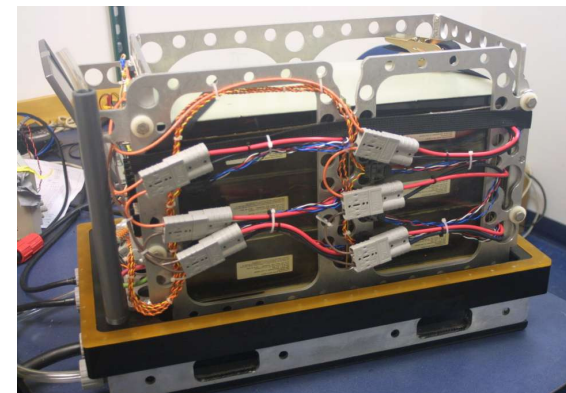
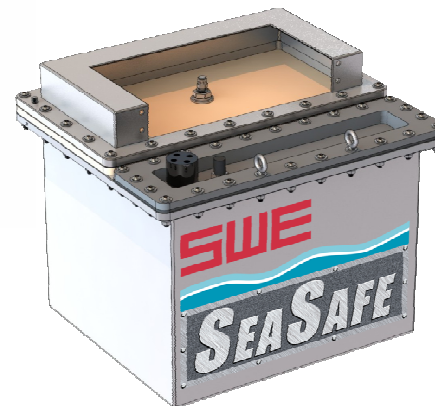
Module 4 hidden from view

SeaSafe 4-Module System Internal View



## About SWE SeaSafe:

- Pressure Tolerant Autonomous Smart Module Building Block w/RS-485 Modbus Com Port.
- Std 29V Module w/8 Series, 31Ah Li-Polymer Cells.
- Smart Module w/All Best Practice BMS Functions.
- 4-Module Pressure Tolerant 316 Stainless Steel Battery System Building Block is Standard.
- Custom Battery Systems for AUVs, ROVs, & MUVs are Supported.



# SeaSafe Test History



SOUTHWEST ELECTRONIC ENERGY GROUP

Advanced Battery Solutions

Test	Description	PSI	Location & Date	Operator	Result
A	Lithium Polymer Cell - Korean	10,000	DSPL – 02/2010	DSPL	Passed
B	Lithium Polymer Cell - Korean	10,000	DSPL – 02/2010	DSPL	Passed
C	SeaSafe Lithium Polymer Module – 1 (Korean cells)	6,000	WHOI – 01/2013	WHOI	Passed
1	SeaSafe Lithium Polymer Modules – 4 (Korean cells)	10,000	SWRI – 02/2013	SWE/SWRI	Failed; ReDesign
2	SeaSafe Lithium Polymer Module – 1 (Korean cells)	10,000	SWRI – 05/2013	SWE/SWRI	Passed
3	SeaSafe Lithium Polymer Modules – 4 (Korean cells)	10,000	SWRI – 06/2013	SWE/SWRI	Passed
4	SeaSafe Lithium Polymer U.S. Cells	10,000	SWRI – 10/2013	SWE/SWRI	Passed
5	SeaSafe Lithium Polymer U.S. Cells	20,000	SWRI – 10/2013	SWE/SWRI	Passed

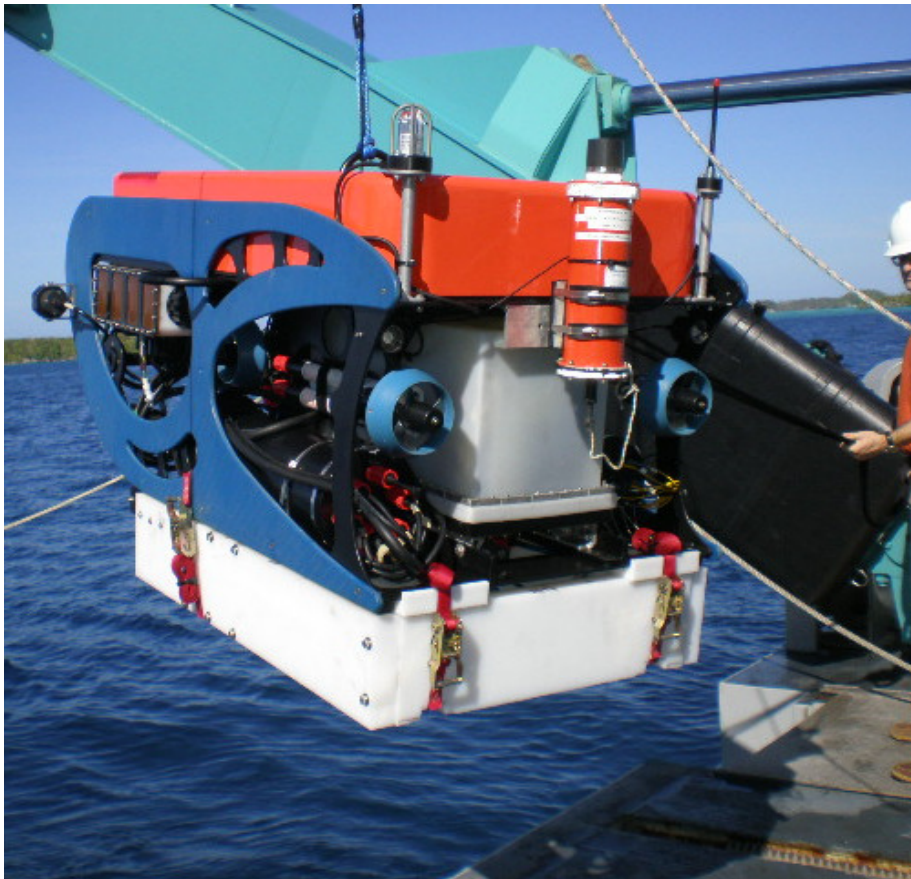
# Test #C – WHOI Custom Battery System on 3D Video ROV

**SWE**

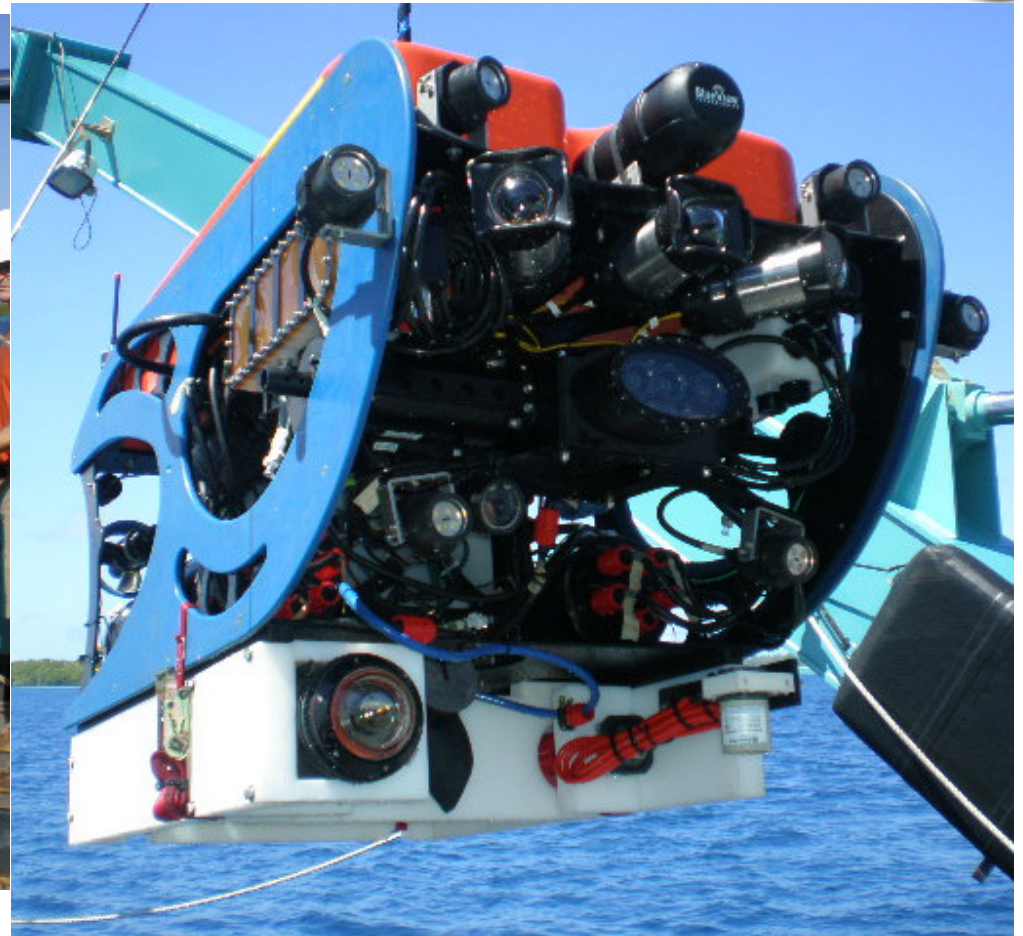
SOUTHWEST ELECTRONIC ENERGY GROUP

*Advanced Battery Solutions*

4



Rear of 3D Video ROV Shows Battery System in White Box at Center.



Front (Business End) of 3D Video ROV Shows Camera Lens and Light Sources. Battery Provides More Power Than the Tether Alone for this High Power Operation.

# Test #1 – SeaSafe Case w/4 Battery Modules

## PURPOSE:

- Obtain Bulk Modulus of Compensation Fluid Thru 10,000psi
- Verify Functional Operation of Case & Modules Thru 10,000psi

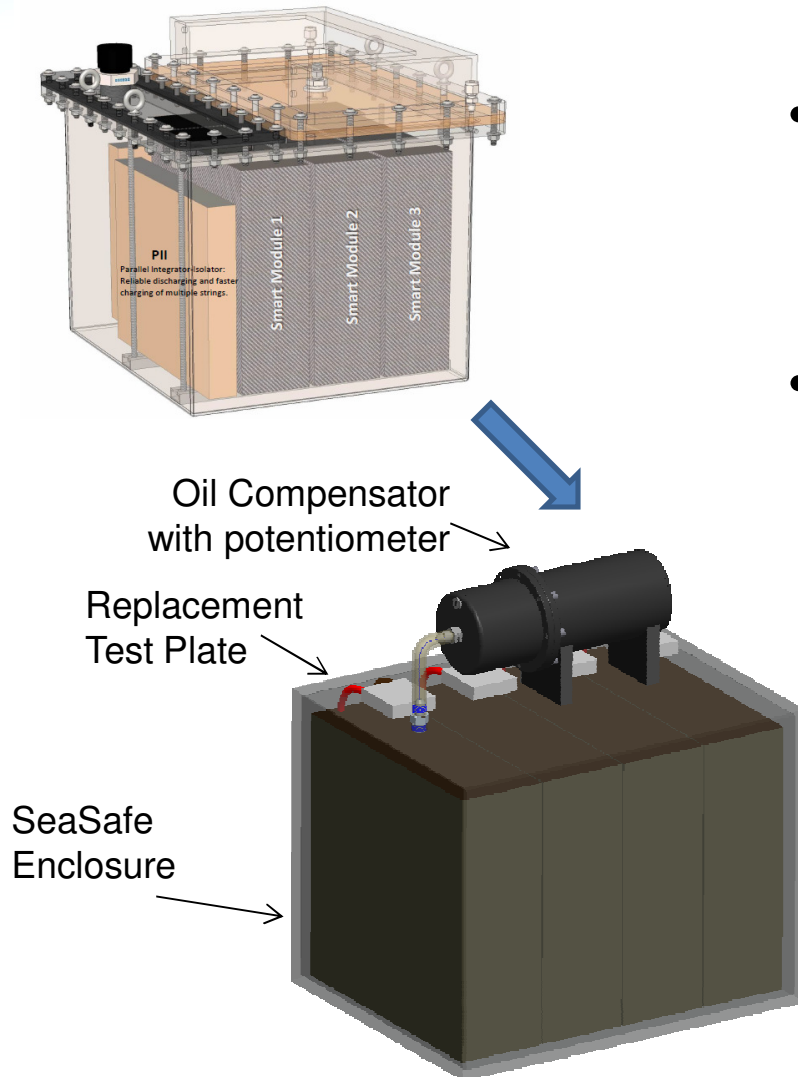
## PROCEDURE:

- Bulk Modulus Test First 2 Days - @ 23°C then @ 0°C
- Functional Tests & Cycle Tests of 4 Series Modules Next 2 Days

## RESULTS:

- Thermal Run Away of One Module on 2<sup>nd</sup> Day of Tests (Other 3 modules failed safe)
- Thorough Failure Analysis of All 4 Modules
- Design Out Pressure Sensitive Component on BMS
- Improve Module Fail Safe Redundancy Design

# Test #1 – Fluid Bulk Modulus Characterization Test Setup



- Purpose:
  - Characterize the change in module volume as a function of Depth
- Approach
  - Replace SeaSafe Case Compartment Lid with a solid test plate with port fitting
  - Plumb fitting to instrumented compensator
  - Record compensation volume change as a function of depth at two temperatures (23 °C & 0 °C)

# Test #1 – Failure Analysis Highlights

**SWE**

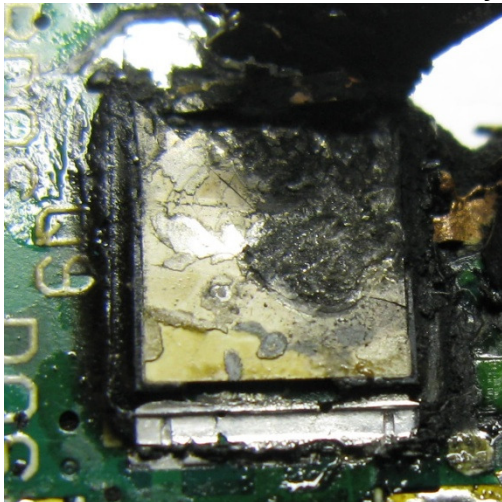
SOUTHWEST ELECTRONIC ENERGY GROUP

Advanced Battery Solutions

7



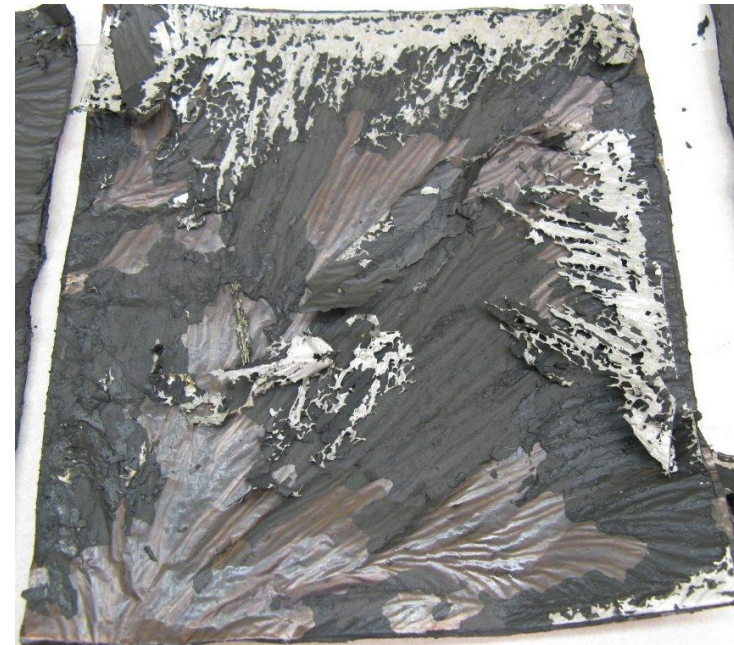
Component Failure => Intense Intermittent BMS Short w/All Cells Heating Simultaneously. Only one of 4 Modules Goes Into Thermal Runaway.



Suspect Components on BMS are dismantled & Studied – This High Power Component Has Cracked From Exposure to High Pressure.



Module is Disassembled & dismantled. All Inside Layers of Each Cell (8 ea.) are Studied - Cell 7 is Shown.



Current Collectors (Aluminum & Copper) are Studied for Shorts & Temp. Analysis. NOTE: Aluminum Has Melted (660°C) but Copper (1085°C) has Not Melted.

# Test #2 – SeaSafe Case w/1 Battery Module

## PURPOSE:

- Verify Functional Operation of Case & Redesigned Modules Thru 10,000psi @ 23°C.
- Verify Functional Operation After Multiple Pressure Cycles.

## PROCEDURE:

- Step Test Chamber to 10,000psi – Discharge and Charge Battery Module at 10,000psi.
- Cycle Test Chamber Continuously from 60psi to 10,000psi while Continuously Discharging and Charging Battery Module.
- Characterize Module's Cells Before and After Pressure Test.

## RESULTS:

- Battery Module Performed All CHG & DSG Functions @ 10,000psi
- Completed 9 Full Pressure Cycles w/CHG & DSG w/o any Failures.
- No Cell Damage Observed After Comparing Pre and Post Characterization of Cells That Had Undergone 9 Pressure Cycles.



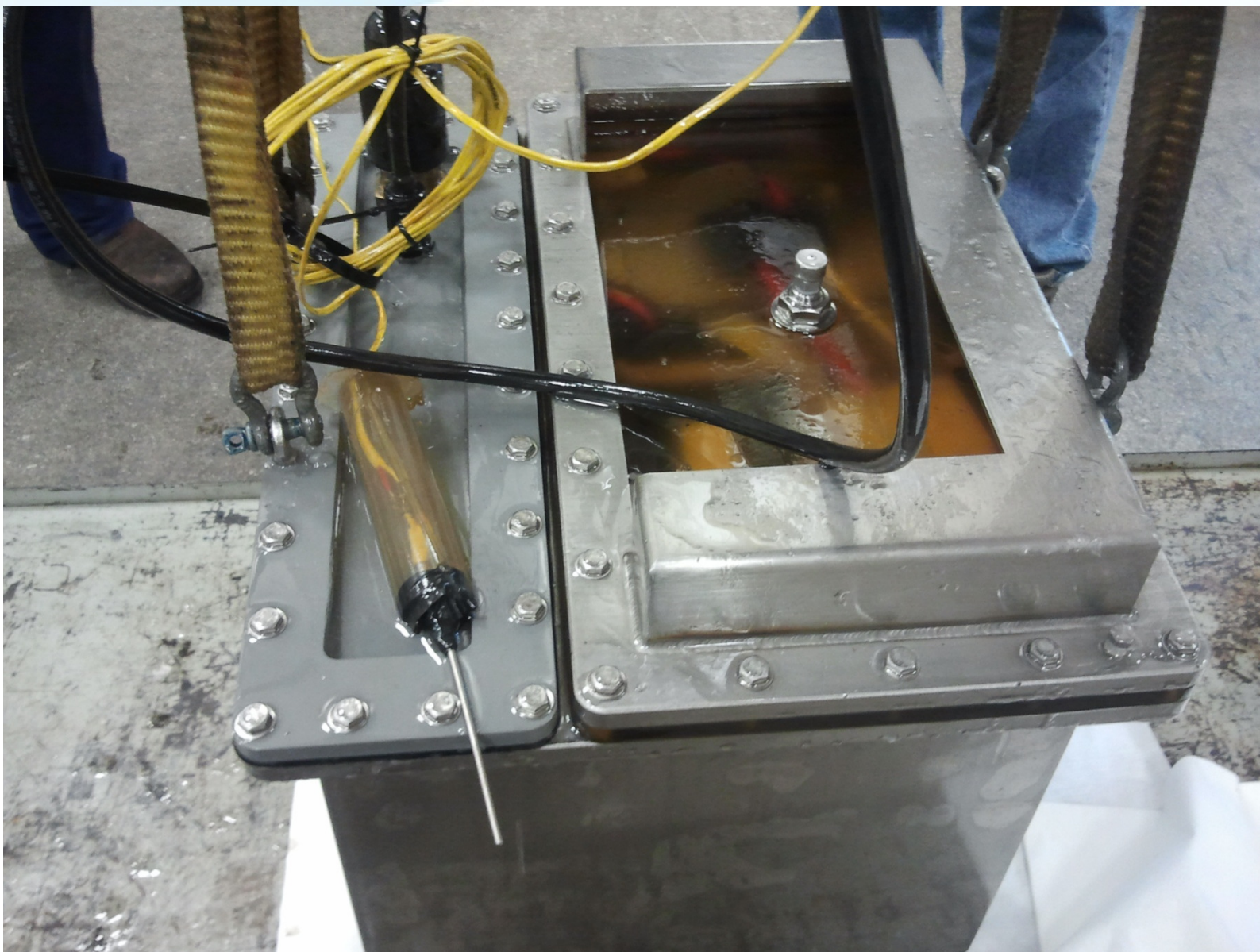
# Test #2 – Post Test Photo

**SWE**

SOUTHWEST ELECTRONIC ENERGY GROUP

*Advanced Battery Solutions*

9



# Test #3 – SeaSafe Case w/4 Battery Modules

## PURPOSE:

- Verify Functional Operation of Case w/4 Series Connected Modules & 1 High Voltage PII Thru 10,000psi @ 0°C.
- Verify Functional Operation of Utility (Single Module) & System (4 Simultaneous Modules) Software.
- Verify Functional Operation of System HW & SW After Multiple Pressure Cycles.

## PROCEDURE:

- Step Test Chamber to 10,000psi – Discharge and Charge 4 Series Connected Battery Modules Thru PII at 10,000psi @ 0°C.
- Cycle Test Chamber Continuously from 60psi to 10,000psi while Continuously Discharging and Charging Battery System Thru PII @ 0°C.
- Characterize Module's Cells Before and After Pressure Test.

## RESULTS:

- Battery System (4S Modules) Performed All CHG & DSG Functions @ 10,000psi
- Completed 9 Full Pressure Cycles w/CHG & DSG w/o any Failures.
- Noted That Continuous CHG & DSG Increased Cells' Temperature by about 10°C.
- No Cell Damage Observed After Comparing Pre and Post Characterization on Battery Module That Had Undergone 18 Full Pressure Cycles.

# Test #3 – Pre Test Photos

**SWE**

SOUTHWEST ELECTRONIC ENERGY GROUP

*Advanced Battery Solutions*

11



Measuring in-water weight of Battery System Prior to Pressure Testing.

Full Instrumentation Prior to Pressure Testing Includes LVDT to Measure Equalization Bladder Depression w/pressure.

# Tests #4 & 5 – SeaSafe U.S.

**SWE**

SOUTHWEST ELECTRONIC ENERGY GROUP

*Advanced Battery Solutions*

## Manufactured Cells

### PURPOSE:

- Verify Lithium Polymer Cells (2 ea.) Manufactured in the U.S.A. Can Discharge and Charge at Both 10,000psi (Test 4) and at 20,000psi (Test 5)

### PROCEDURE:

- Pot 2 U.S.A. Manufactured Cells and Place Them in a Bag Filled with Mineral Oil for Pressure Equalization. Discharge & Charge Cells at both 10,000psi (1<sup>st</sup> day Test 4) & 20,000psi (2<sup>nd</sup> day Test 5).
- Cycle Test Chamber from 60psi to 10,000psi (1<sup>st</sup> day Test 4) while Continuously Discharging and Charging Battery System. Repeat at 20,000psi (2<sup>nd</sup> day Test 5).
- Characterize Test Cells Before and After Pressure Tests.

### RESULTS:

- U.S.A. Manufactured Cells Performed CHG & DSG Functions @ 10,000psi and @ 20,000psi Without Failure.
- After Initial CHG & DSG at Full Pressure Only One Subsequent Full Pressure Cycle w/Continuous CHG & DSG was Performed. Both Performed w/o Failure.
- No Cell Damage Observed After Comparing Pre and Post Characterization on U.S.A. Manufactured Cells That Had Undergone Both 10,000psi and 20,000psi Full Pressure Cycles.

# Tests #4 & 5 – Photos Part 1

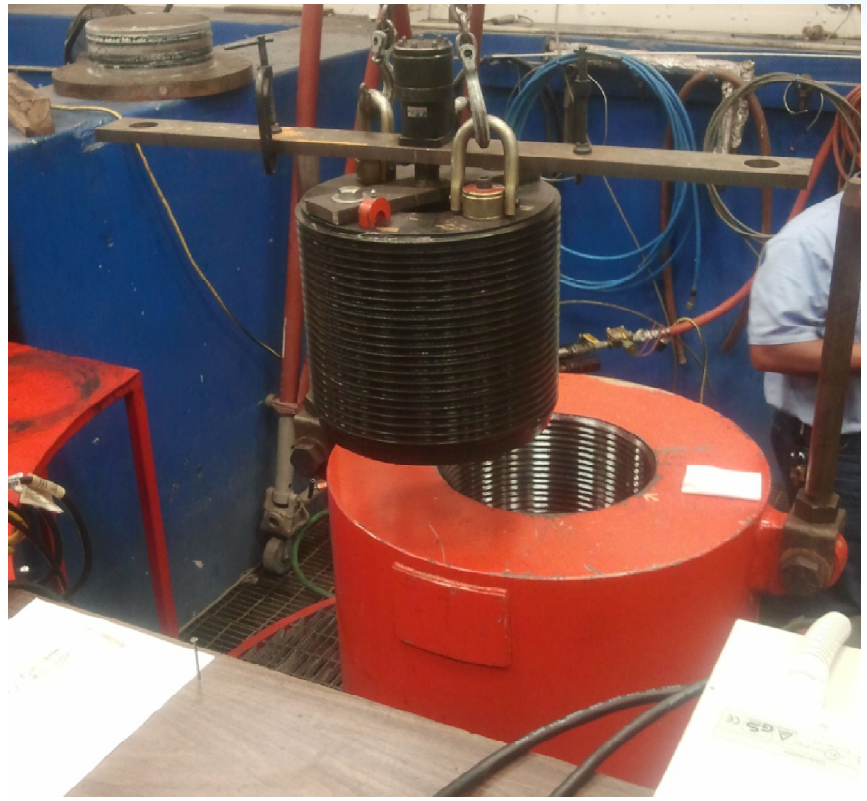


SOUTHWEST ELECTRONIC ENERGY GROUP

*Advanced Battery Solutions*



Two Cells Bagged and Filled w/Mineral Oil Prior to Pressure Testing.



Pressure Test Chamber Able to Test Up to 30,000psi!

# Tests #4 & 5 – Photos Part 2

**SWE**

SOUTHWEST ELECTRONIC ENERGY GROUP

Advanced Battery Solutions



Cells Carried in Girl Scout Tote Bag Being Lowered Into Pressure Test Chamber.

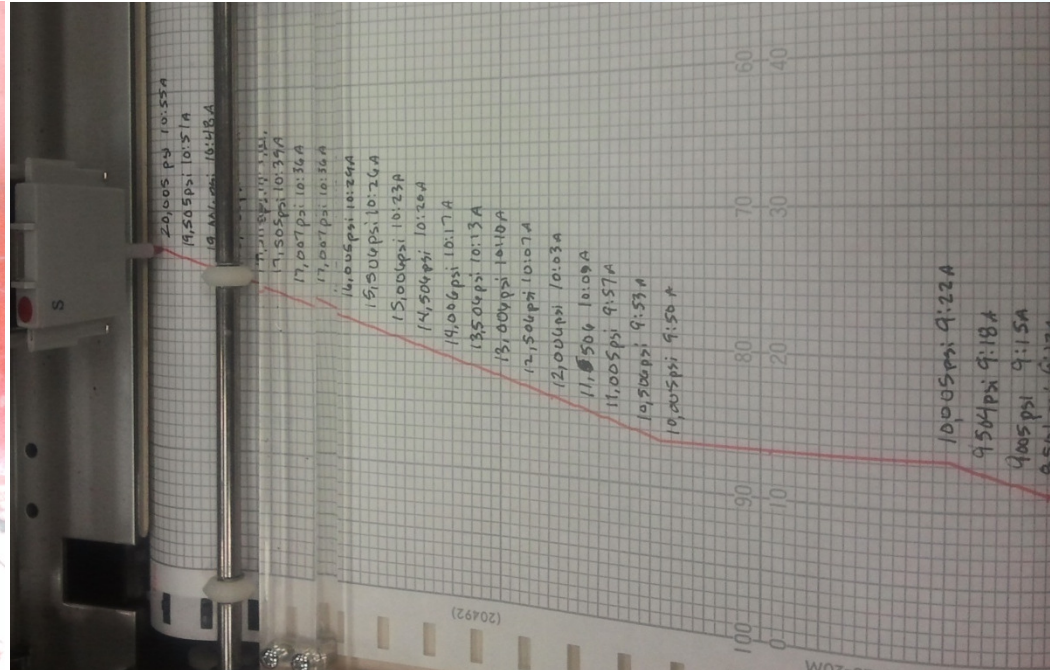


Chart of Pressure Going All the Way to 20,000psi.



Cells Look OK at Completion of Both 10,000psi Pressure Tests and 20,000psi Pressure Tests.

# Other Validation Tests

**SWE**

SOUTHWEST ELECTRONIC ENERGY GROUP

*Advanced Battery Solutions*

15

- **Several Years of Design Validation & Continuous Improvement Design Over Multiple Similar Projects**
- **Extreme Custom Needs => Unique Designs w/ Validation**
- **UN DOT 38.3 Certification Test Completions**
- **ISO 13628-6 2006 Certification Test Completion**

# Potential Future Test Plans

**SWE**

SOUTHWEST ELECTRONIC ENERGY GROUP

*Advanced Battery Solutions*

- Continuous Improvement Tests as Needs Arise
- Testing of BMS 20,000 psi
- Testing Smart Battery Module to 20,000 psi
- Testing Battery System(s) to 20,000 psi
- Testing on Alvin or Other MUV/HOV
- 3<sup>rd</sup> Party Tests/Certs As Required
  - ABS, LR, BV, DNV, GL, NK, RS, etc.
  - Navsea
- Testing Custom Battery System Designs to Meet Challenging New Requirements



# Summary

**SWE**

SOUTHWEST ELECTRONIC ENERGY GROUP

*Advanced Battery Solutions*

- 4 Yrs Cell, Module, & System Li-Ion Pressure Tests
- Multiple Pressure Test Houses
- 3<sup>rd</sup> Party & Partner Pressure Testing
- Continuous Improvement via Pressure Test to Failure
- Design Validation via Pressure Test Successes
- Testing Beyond Immediate Needs (i.e., 20,000 psi)
- Complementary Internal & 3<sup>rd</sup> Party Lab Testing
- Validation Thru Broad Experience & Unique Challenges

# Acknowledgement

---

THE AUTHORS WOULD LIKE TO THANK  
DANIEL GOMEZ-IBANEZ WITH  
WOODS HOLE OCEANOGRAPHIC INSTITUTION  
FOR COLLABORATION IN DEVELOPING,  
PRESSURE TESTING, AND IN-WATER TESTING  
SWE SEASAFE LITHIUM-ION BATTERY SYSTEMS

# Extensive Testing and Certification



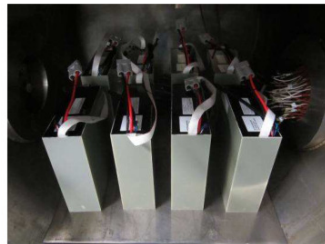
SOUTHWEST ELECTRONIC ENERGY GROUP  
Advanced Battery Solutions

International Shipping Safety Certified - UN Manual of Test and Criteria Section 38.3

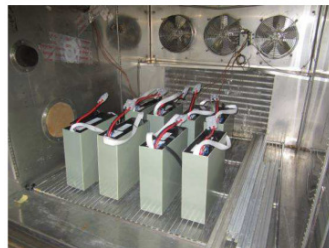
**RESULT SUMMARY:** The tested samples met the test requirements. See below breakout for tests performed.

Specification Section	Test Description	Results
T1	Altitude Simulation	Conforms
T2	Thermal Test	Conforms
T3	Vibration	Conforms
T4	Shock	Conforms
T5	External Short Circuit	Conforms
T7	Overcharge	Conforms

T1 – Altitude Simulation Test



T2 – Thermal Test



T5 – External Short Circuit



**Intertek**

4500 Main Street  
Suite 100  
Farmington, MI 48170  
Telephone: 734-652-2000  
Facsimile: 734-652-2001  
www.intertek.com

**TEST VERIFICATION OF CONFORMITY**

**TEST METHOD:** UN-001 Manual of Tests and Criteria "Recommendations on the Transport of Dangerous Goods" section 38.3  
"Lithium Batteries"  
Document number: 8750/AC.10.11 (Rev. L, Amend 1)  
Edition as of: Special Amendment 1  
Effective Date: April 2012

**SAMPLE DESCRIPTION:** Eight (8) 801FC9/918WH Battery Packs  
**MANUFACTURER:** Southwest Electronic Energy Corp.

**SPECIFICATION SECTIONS T1 through T4 and T7:**  
Eight (8) 801FC9/918WH Battery Packs, sample numbers:  
**80091 Packs = 1 Cycle**

<ul style="list-style-type: none"> <li>• SN 1</li> <li>• SN 2</li> <li>• SN 3</li> <li>• SN 4</li> </ul>	<ul style="list-style-type: none"> <li>• SN 5</li> <li>• SN 6</li> <li>• SN 7</li> <li>• SN 8</li> </ul>
--	--

**Battery Packs – 10 Cycles**

**Condition of Test Sample:** Production

**DATE RECEIVED:** 12/10/2012  
**DATES TESTED:** 12/14/2012 through 02/12/2013

**RESULT SUMMARY:** The tested samples met the test requirements. See below breakout for tests performed.

Specification Section	Test Description	Results
T1	Altitude Simulation	Conforms
T2	Thermal Test	Conforms
T3	Vibration	Conforms
T4	Shock	Conforms
T5	External Short Circuit	Conforms
T7	Overcharge	Conforms

February 16, 2013  
Report No.: 100891210E1-001

Nick Diamond  
 Engineering Supervisor

Michael Wells  
 Department Manager

This verification is for the exclusive use of the Client and is provided pursuant to the agreement between Intertek and its Client. Intertek's responsibility and liability are limited to the terms and conditions of the agreement. Intertek assumes no liability in any party, other than to the Client in accordance with the agreement, for any loss, expense or damage incurred by the use of this verification. Only the Client is authorized to copy or distribute this verification. Any use of the Intertek name or logo for the sale, advertisement or other promotional or service material that is not approved or written by Intertek. The information and test results referenced from this verification are relevant only to the sample tested. This verification by itself does not imply that the material, product, or service is free from other safety or performance verification programs.

Intertek Testing Services NA, Inc.  
4500 Main Street, Suite 100, Farmington, MI 48170  
Telephone: 734-652-2000 \* Fax: 734-652-2001 \* Web: www.intertek.com

T3 – Vibration Test



T4 – Shock Test



T7 – Overcharge



T1

T2

T5

T3

T4

T7

# Extensive Testing and Certification

- **Design of Subsea Equipment standard (ISO 13628-6:2006) relevant to Batteries**
  - Testing per ISO 13628-6 2006
    - Shock per section 11.2.5.2.1 method Q2. Sinusoidal
    - Vibration per section 11.2.5.2.2 method Q2. Random

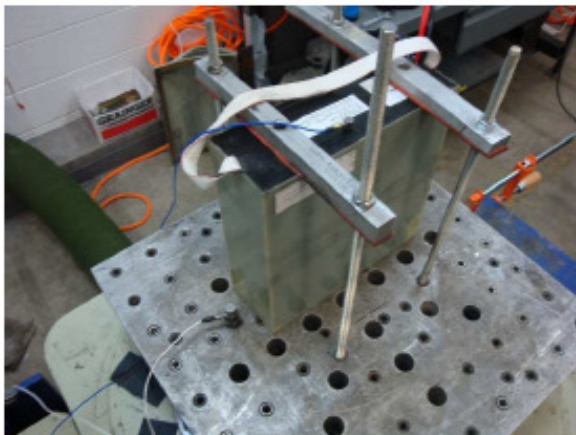


Figure 1: Vertical setup.

**Intertek** 4700 Brimley St, Suite 200  
Kirkwood, MO 64512  
Telephone: 616-696-7400  
Facsimile: 616-696-7222  
www.intertek.com

Southwest Electronic Energy Group  
Date: March 25, 2013  
PO # PO-0401046

Report No.: G100297501GRR-001  
Page 1 of 10

Test Report For:  
Southwest Electronic Energy Group  
Vibration Testing of  
Lithium Battery Packs

*Jeff Anway*  
Jeff Anway  
Project Engineer  
Performance Group

*Brad Burch*  
Brad Burch  
Reviewer

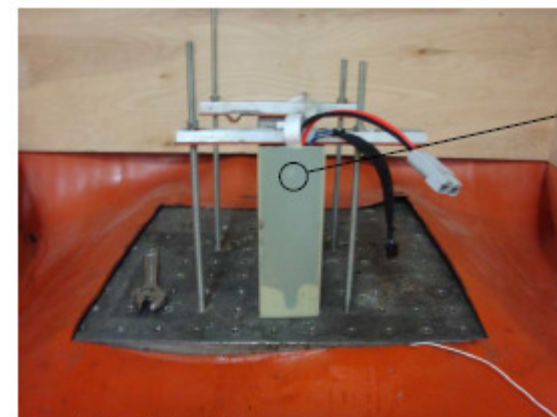


Figure 14: Longitudinal setup.

# Backup- UN DOT 38.3 Tests

**SWE**

SOUTHWEST ELECTRONIC ENERGY GROUP

Advanced Battery Solutions

**Table 3. UN transportation tests**

UN 38.3.4.1	Test T.1 – Altitude Simulation		Cells and batteries stored at a pressure of 11.6 kPa or less for at least six hours at ambient temperature
UN 38.3.4.2	Test T.2 – Thermal Cycling		Rapid thermal cycling between high- (75°C / 167°F) and low- (-40°C / -40°F) storage temperatures
UN 38.3.4.3	Test T.3 – Vibration		Vibration exposure: sinusoidal waveform with a logarithmic sweep from 7 Hz (1 g peak acceleration) to 200 Hz ( 8 g peak acceleration) and back to 7 Hz; 12 cycles, 3 perpendicular mounting positions
UN 38.3.4.4	Test T.4 – Shock		Shock exposure: half-sine shock, 150 g peak acceleration, 6 msec pulse duration, three shocks in positive and negative directions for each of three perpendicular mounting positions (total of 18 shocks)
UN 38.3.4.5	Test T.5 – External Short Circuit		Short circuit of less than 0.1 ohm at 55°C (131°F), 1 hour duration
UN 38.3.4.6	Test T.6 – Impact	N/A	15.8 mm diameter bar placed across cell center, and a 9.1 kg mass is dropped onto the bar from 61 cm height
UN 38.3.4.7	Test T.7 – Overcharge		Over current (2X manufacturer's recommended maximum) and over voltage (for 18 V packs or less, charge to the lesser of 22 V or 2X recommended charge voltage. For > 18 V packs, charge to 1.2X recommended charge voltage) charge (applied to battery packs only)
UN 38.3.4.8	Test T.8 – Forced Discharge	N/A	Over-discharge cells a single time